

PAGE 1	INDEX / GENERAL
PAGE 2	HATS / ZIPPER PULLER
PAGE 3	JACKETS / HOODS
PAGE 4	BOTTOMS - FRONT SIDE
PAGE 5	TOPS
PAGE 6	DRESSES / BOWS / SASHES - FRONT SIDE
PAGE 7	DRESSES / SASHES - BACK SIDE
PAGE 8	DECORATIVE TRIM
PAGE 9	FRINGE
PAGE 10	KNOTS

GENERAL

The purpose of this instruction is to ensure safety in all our childrens wear.
Supplier is responsible to make all products compliant with:

General Product Safety Directive,
CEN/TR 16792 and Safety of children's clothing
EN 14682 Safety of children's clothing
CEN/TR 17376 Safety of children's clothing

Size range for Salling Group:

MINI: from birth to size 92 cm

KIDS: from size 98 cm to size 140 cm

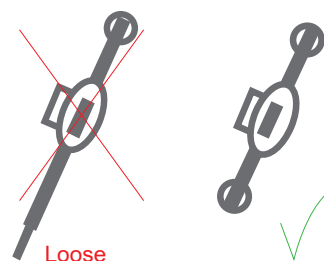
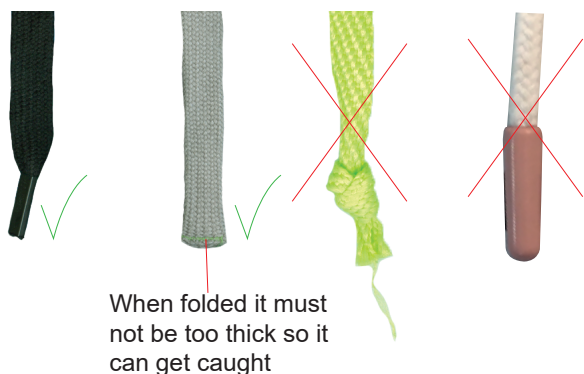
JUNIOR: from size 134 cm to size 170 cm

String ends:

String ends must be with a shoelace end or folded so it is not too thick and fastened
– **must be secured to prevent fraying.**

Never use a knot, pearls or other 3D effects that can cause choking hazard.

Ends may not ravel so the total length of the string will increase in size.



Toggles:

Strings in toggles shall not have any free ends

Fixed loops:

E.g. hanger loops, belts or fixed bows which protrude from garment, must be no longer than 7,5 cm in circumference.

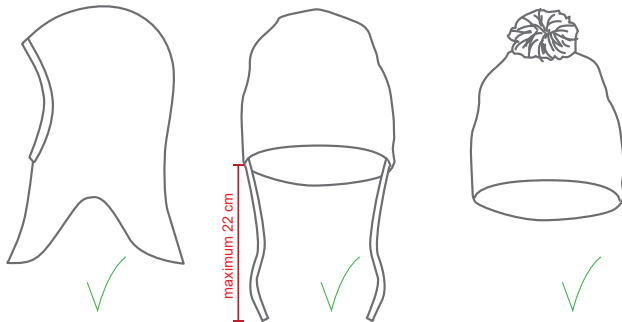
Drawstrings:

When drawstrings is permitted, they must be attached at least at one point center back with E.g. a bar tack

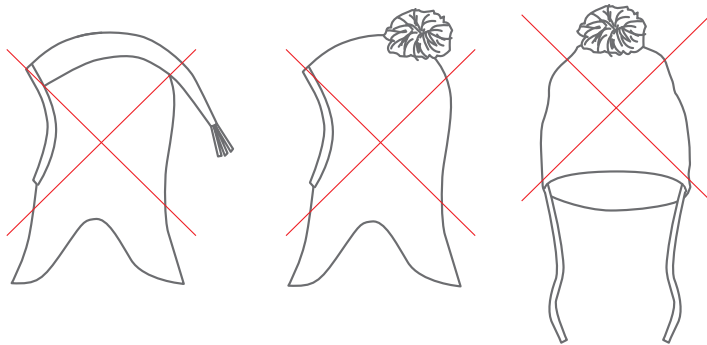
If the hat has any decorative trimming e.g. pompom, there may not be anything around the chin.
(Due to danger of suffocation and the the child can not get caught)

No "3D effects" that can get caught at string ends.

Maximum string length = 22 cm



Pompoms must be bigger than 3,2 cm in diameter.
And maximum 7,5 cm in diameter.



Scarfs, tubes and the like – be aware of the following:

Must NOT be loose knitted/crocheted

Must NOT have hanging frays, pompoms, or the like

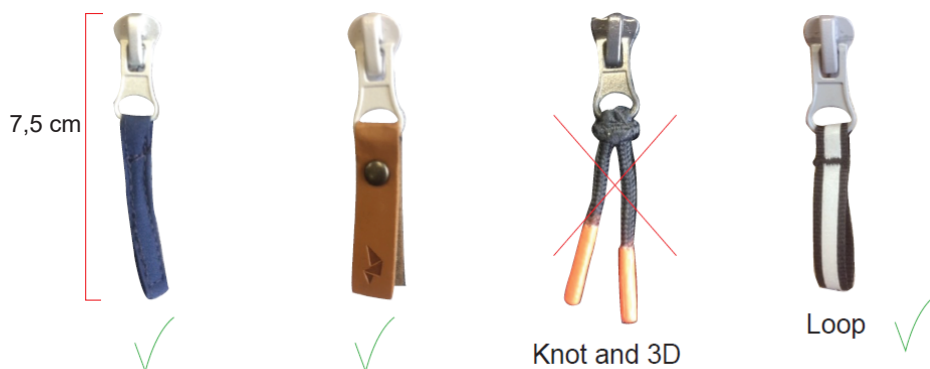
Tubes must fit close to neck when wearing

Zipper puller:

Zipper pullers are allowed if they are no longer than 7,5 cm incl embellishment and have no 3D ends.

The pullers must be flat, fully sewn or be with split ends.

Knots or any kind of 3D ends are not allowed. Loop is allowed if circumference is max 7,5 cm.



Note: please see page 1 for string ends

Hood Mini and Kids:

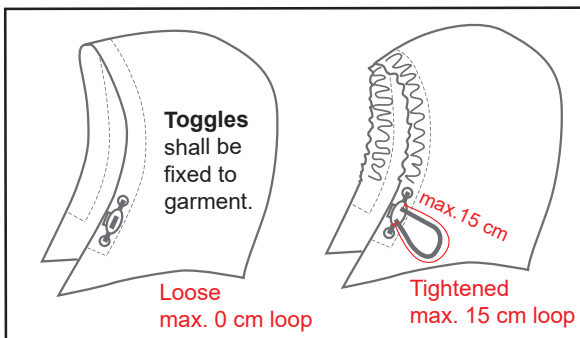
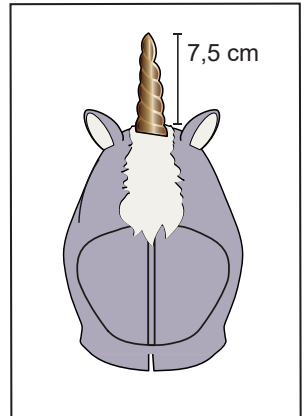
Not law - rule for Salling Group.
Hood must be detachable.
If fur trim at edge, the band must be detachable with press buttons or zipper.
No closure under chin.

Hood Junior:

There may be no cords or straps at back or at the side of the hood if it's not detachable.
But if it is detachable then you can add strings and straps at max 7,5 cm.

Decorated hoods for suits or tops

can have ears or horn etc. if it's made in fabric and not cords.
Max length of 7,5cm
Not able to be tied together.
No 3D ends.



Adjustable strap with velcro MINI, KIDS, JUNIOR

Adjustable strap with velcro is allowed, maximum length 7,5 cm
No button, toggle or buckle on free ends

Adjustable strap at sleeve

is ok but must not hang below bottom of sleeve.

This means that the strap must not be too soft/ thin. Shall lie flat against the garment.

maximum length = 10 cm
minimum width = 2 cm

Note: please see page 5 for string at hood

Note: please see page 4 for loose belts

Note: please see page 6 for sash / soft belts tied at front

Note: please see page 7 for sash / soft belts tied at back

Adjustable strap at bottom

is ok but must not hang below bottom when it is unfastened.

This means that the strap must not be too soft/ thin. Shall lie flat against the garment.

Shall have no button, toggle or any 3D shape.

Maximum length = 14 cm
minimum width = 2 cm

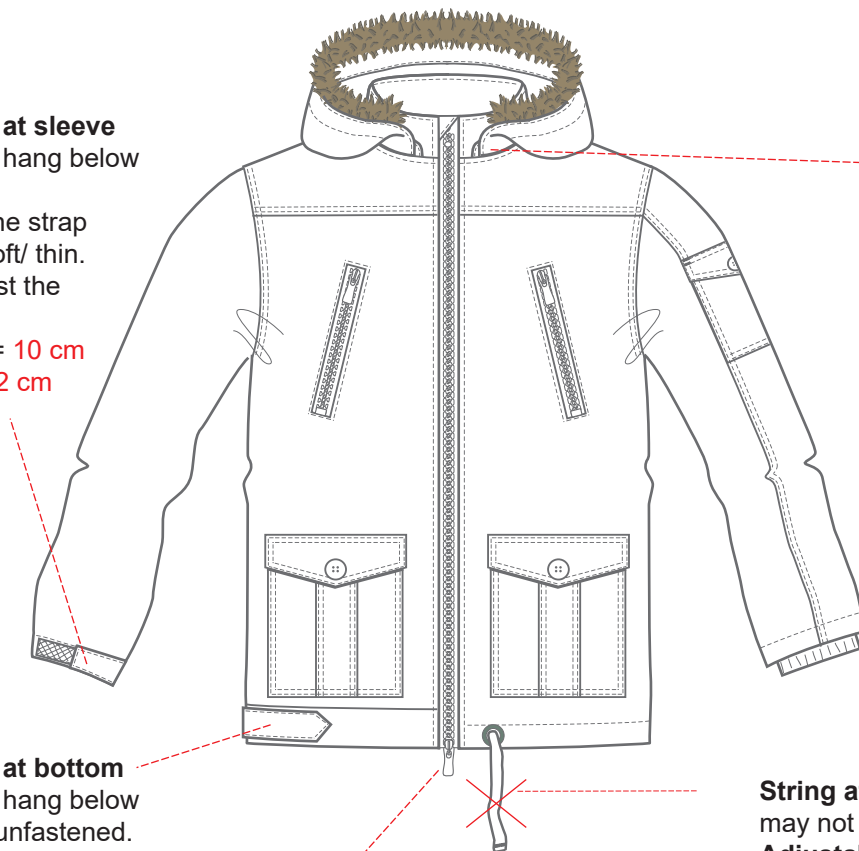
Zipper puller
See page 2

String at bottom

may not hang below hemline.

Adjustable bottom see page 4

is ok but the elastic must never hang below hemline.



BOTTOMS - FRONT SIDE

PAGE 4

SALLING GROUP / SAFETY IN CHILDRENS WEAR

Functional string length for MINI styles: Salling Group rule when cord hang loose from exithole
Size: 62+68+74: **10 cm**
Size: 80+86+92: **12 cm**

Functional string length for KIDS and JUNIOR styles: Salling Group rule when cord hang loose from exithole
Size: 98+104+110+116: **14 cm**
Size: 22+128+134+140: **16 cm**
Size: 146+152+158: **18 cm**
Size: 164+170: **20 cm**

Backside:
Straps: max length 7,5 cm
No toggle, buckle or 3D

Functional string length at waist

not elastic.
maximum string length measured from "exithole":
when waist is loose = **20 cm**
when waist is tightened to normal use = **28 cm**

Decorative string length at waist

not elastic.
maximum string length measured from "exithole":
when waist is loose = **14 cm**
when waist is tightened to normal use = **28 cm**

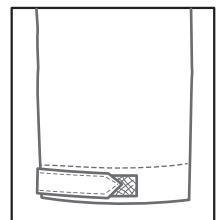
Note: please see page 1 for **string ends**

Zipper at bottom
is ok as long as the zipper puller does not hang below hemline.

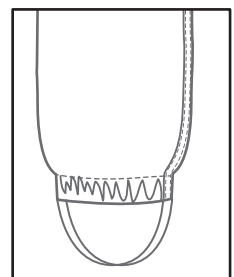
Adjustable waist and string
must be fastened center back.

Beltloops
maximum length = **7,5 cm**
must lay flat

Adjustable strap at bottom
is ok but must not hang below bottom when the strap is unfastened.
This means that the strap must not be too soft/ thin.
Shall lie flat to garment.
Maximum length = **14 cm**
minimum width = **2 cm**



Stirrups
"elastic band to go around foot"
is ok

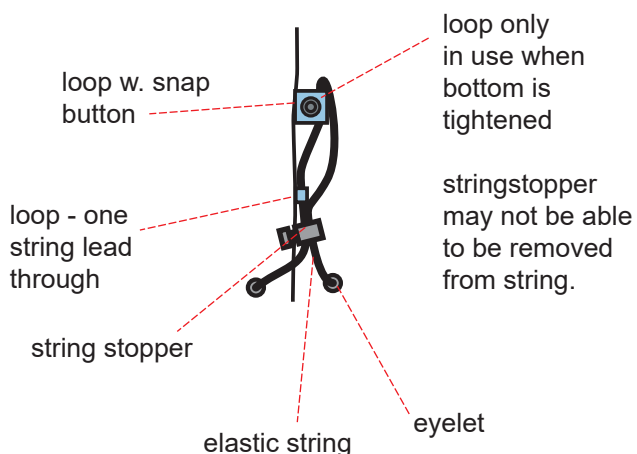


String at bottom
is **not** allowed!
Adjustable bottom
is ok but the elastic must never hang below.

Adjustable bottom must be placed on the inside of the garment

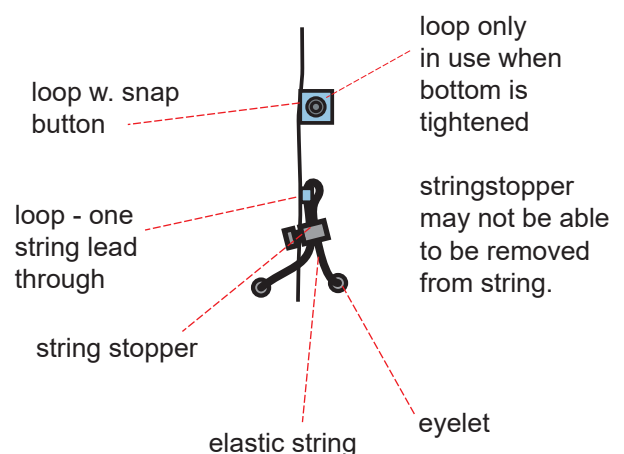
Adjustable bottom:

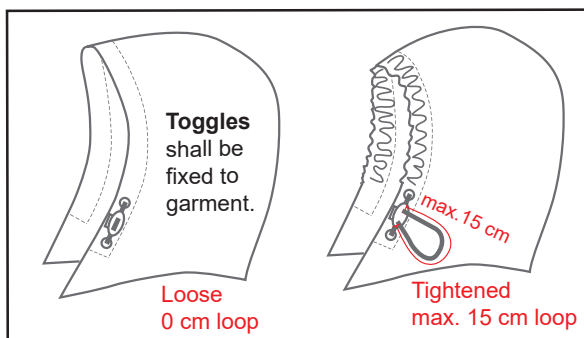
When bottom is **tightened**



Adjustable bottom:

When bottom is **loose**





String at hood JUNIOR

Drawstring with free ends = not permitted
Functional cord is ok, but maximum length 7,5 cm.
Decorative cord + embellishment = maximum length 7,5 cm
No elastic strings allowed

String at hood MINI, KIDS:

no strings!

String length

not elastic.

Strings are allowed on short sleeves (above elbow)

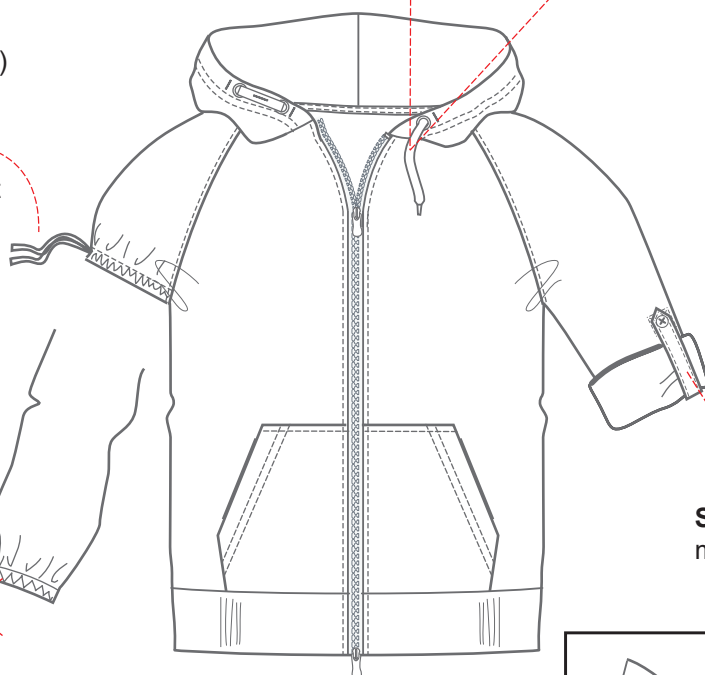
Maximum string length:

MINI / KIDS = 7,5 cm

JUNIOR = 14 cm

No "3D effects" that can get caught at ends.

No strings at bottom of long sleeves.



Strap lenght above elbow

KIDS: max 7,5 cm

JUNIOR: max 14 cm

Strap for fold up

maximum length = 14 cm

Adjustable strap at sleeve

is ok but may not hang below bottom of sleeve when it is open.

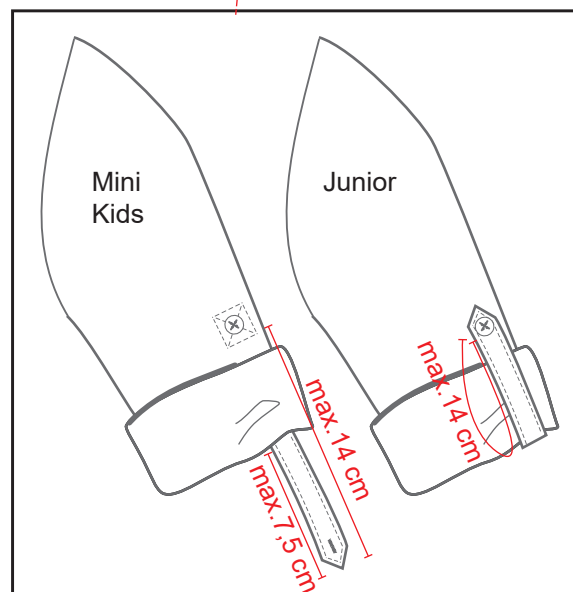
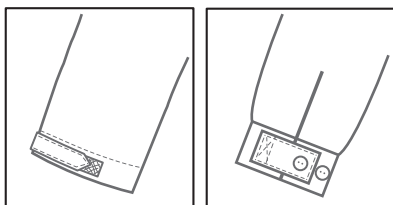
This means that the strap may not be too soft/ thin.

Minimum width = 2 cm

Maximum length = 10 cm

Zipper puller

See page 2



MINI/ KIDS: strap must be fastened at fold, so the length does not get more than 7,5 cm

JUNIOR: the middle / center of the strap must be above elbow.

Straps must be placed so they never hang below bottom of sleeve when they are unfolded.

Note:

Please see page 1 for string ends

Halterneck

No tie strings or loose ends are allowed.

Clip fastenings is acceptable.

Adjustment with ring and slider is allowed if the strap and loop lie flat to the body.

Click closure allowed, if it lies flat to body.

Elastic inside is allowed.

Functional bows and strings

with ring and slider

Use of clips or fastening of two

cords is acceptable - only if

there are no free ends of the cord when garment is worn.

Straps must lie flat to body.

Shoulder straps

Must lie flat to body.

Clip fastening is acceptable.

Elastic allowed.

No tie strings are allowed.

Shoulder straps with free ends, when worn

MINI + KIDS = 0 cm long free ends

JUNIOR = 14 cm long free ends

Sash / soft belts at front or side of garment

Must be attached with bartack at Center Back.

Width = minimum 3 cm

Maximum length measured from where the belt is to be tied = maximum 36 cm

Fixed loops

Loops that lie flat to body may be 7,5 cm in length. E.g. beltloops.

Loops that go out from body may be 7,5 cm in circumference. E.g. bows.

Decorative cord / strings (MINI + KIDS)

may not be elastic.

maximum cord / string length = 7,5 cm

no button, knot, toggle, buckle, or 3D

embellishment on free ends

are allowed.

Shall not cross or be placed

so they can be tied across throat

Decorative bows

may not be elastic.

maximum cord / string length = 7,5 cm

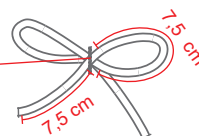
maximum loop length = 7,5 cm

no button, knot, toggle, buckle, or 3D

embellishment on free ends

are allowed.

Fastened so it is not possible to untighten the bow



String length on dresses

not elastic

measured from "exithole"

when waist is loose = 14 cm

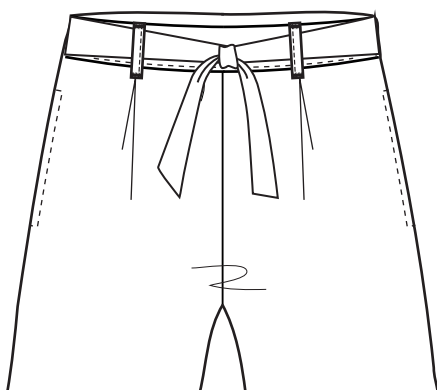
Length is for both functional and decorative cords.

String length

No strings below bottom.

Sash / belts for pants:

Same rules as for dresses. Min. 3 cm wide and max 36 cm from CF join.

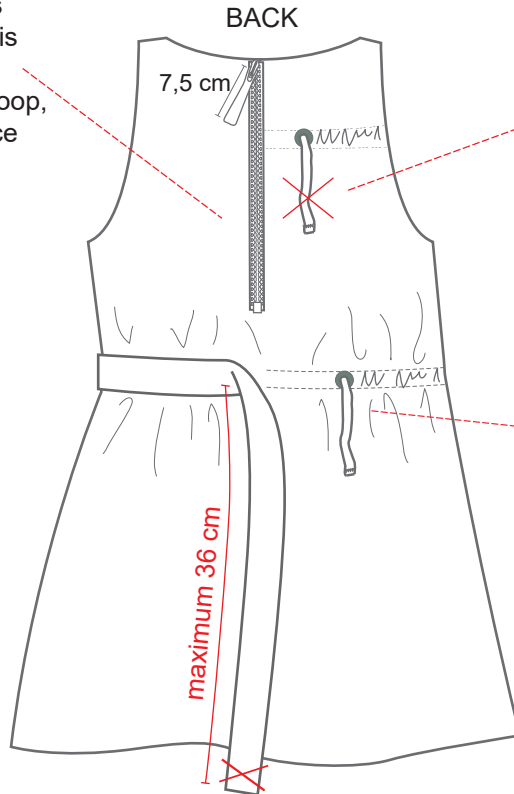


Note: please see page 1 for string ends

MINI, KIDS & JUNIOR

Zipper at CB of dress

Zipperpuller at 7,5 cm is allowed on zipper.
If the extra puller has loop, then max circumference is maximum 7,5 cm



Strings at back of garment

Neck and chest area:
No decorative cords are allowed at the upper chest area / or neck area.

Strings at back of garment

Waist area:
No drawstrings or functional cords may be attached from the back.
Decorative cord is allowed in maximum length 7,5 cm incl adjustable tabs
No knots, toggle or 3D ends.

Sash / soft belts at back of garment

Loose belts or attached belts
width = minimum 3 cm
Length from where the belt is to be tied = maximum 36 cm
Length from where the belt hangs loose or where it is tied.
= must never hang below bottom hem

USE OF DECORATIVE TRIM FOR SIZE 0 - 98CM

MINI: from **birth** to size **98cm**

Special rules for small children under 3 years because of choking hazard.

At Salling Group size 98cm is the smallest size for the KIDS range, and below rules must be followed for that size.

If it's not possible to follow the rules, then the size 98cm must be removed from the assortment.

SEQUINS / STUDS / BEADS



Must withstand a pull of 50 newton - if max 6mm

Must withstand a pull of 90 newton - if more than 6mm

POMPOMS

Must withstand a pull of 50 newton - soft.

Must withstand a pull of 90 newton - with hard center.

SEQUINS

Never use sequins for MINI styles. (Salling Group rule)

Sequins must be fastened at 3-4 points when used for size 98 or 98/104

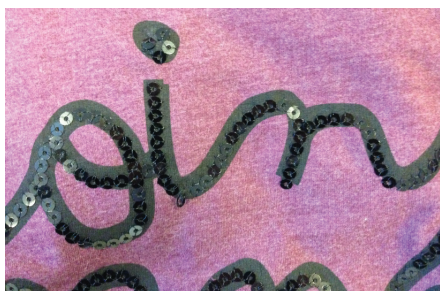
Sequins decorations that are not possible to fasten at 3-4 points must eg be made as glitter/foil/high rubber print for size 98 or 98/104. For knitwear sequins decoration can be made as jaquard knit pattern.

STUDS / BEADS

Never use studs/beads for MINI styles. (Salling Group rule)

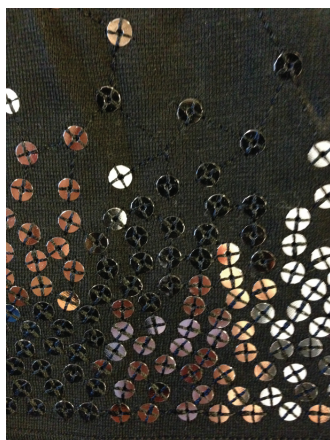
Studs/beads decorations must eg be made as glitter/foil/high rubber print for size 98 or 98/104.

EXAMPLES OF ALTERNATIVE DECORATION SOLUTIONS:



SEQUINS ON A STRING

FIXED AT 3 POINTS EACH SEQUIN



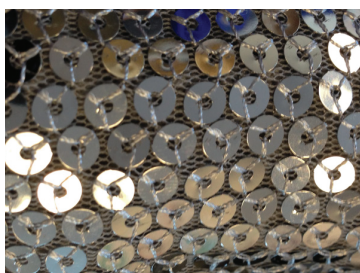
SEQUINS FIXED AT 4 POINTS
EACH SEQUIN



„SEQUINS“ MADE AS HIGH
RUBBER PRINTING



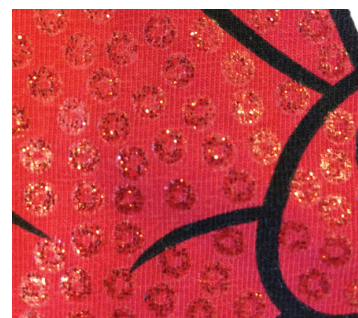
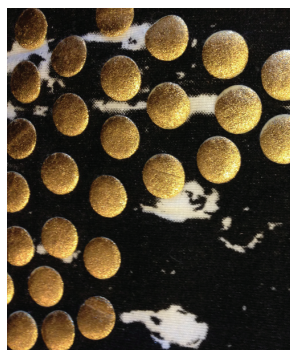
GLITTER PRINTING



SEQUINS ON MESH FASTENED
AT 3 POINTS EACH



„HIGH FOIL“
FOIL WITH RUBBER LAYER UNDERNEATH



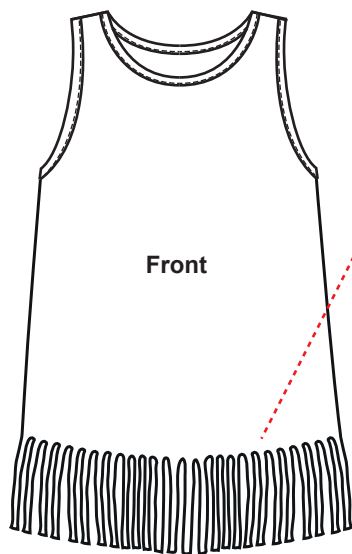
GLITTER PRINTED „SEQUINS“



FOIL PRINTING

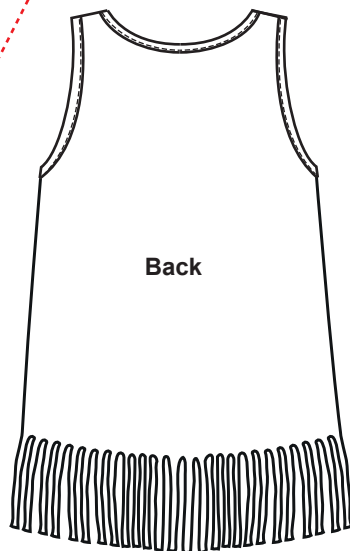


FOIL PRINT ON KNIT



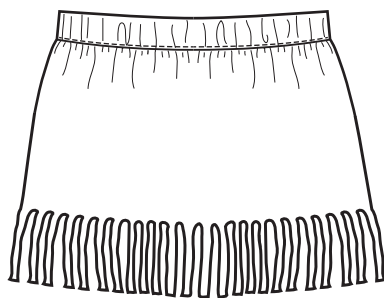
Fringes or frills at front:

No decorative cords are allowed at hemline if the hem ends below the crotch area.
Above crotch 7,5cm is allowed.



Fringes or frills at back:

Max length at 2cm
May not be able to extend.



Fringes or frills:

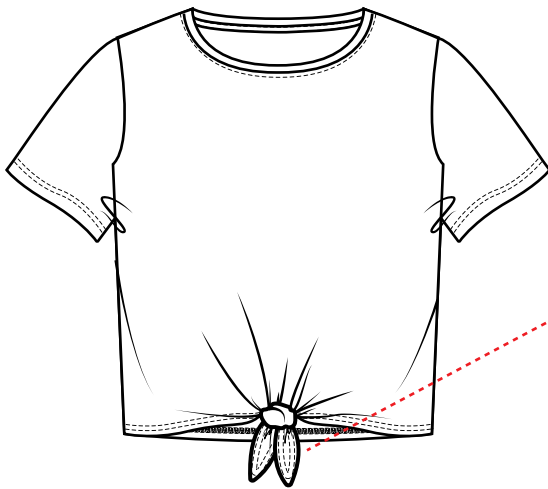
Max length 2cm on skirts and dress hem is allowed.



Fringes or frills at side:

Max length at 2cm is allowed.

Hemline.



Knots at front:

Knots are allowed at hemline if tiestring does not end below crotch.

Tie strings to be as short as possible.

Length of straps to tie:

Max length from valley to tip 7,5cm

Measure as below.

